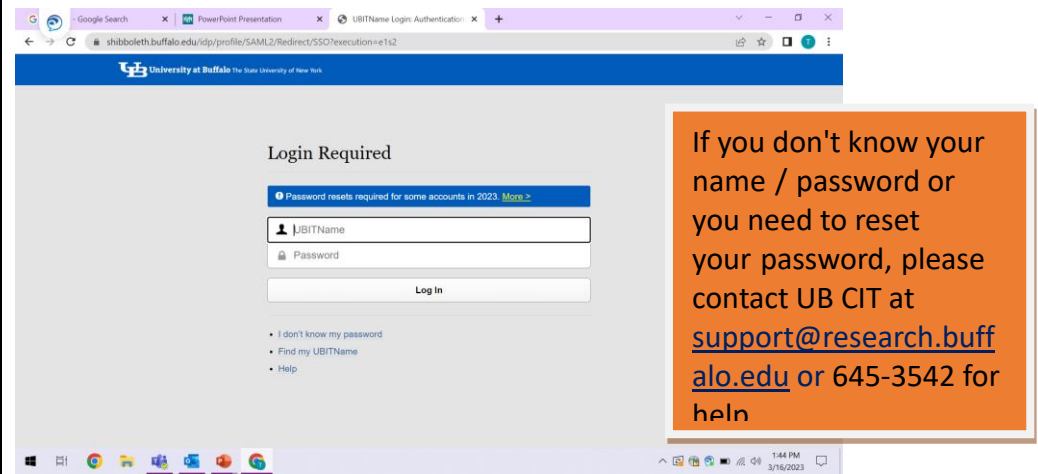
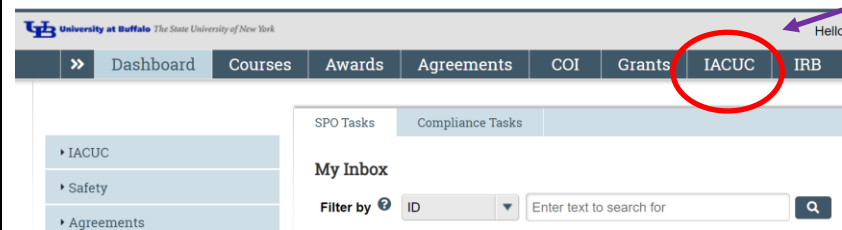


Quick Reference Guide: How to Remove a PI Proxy

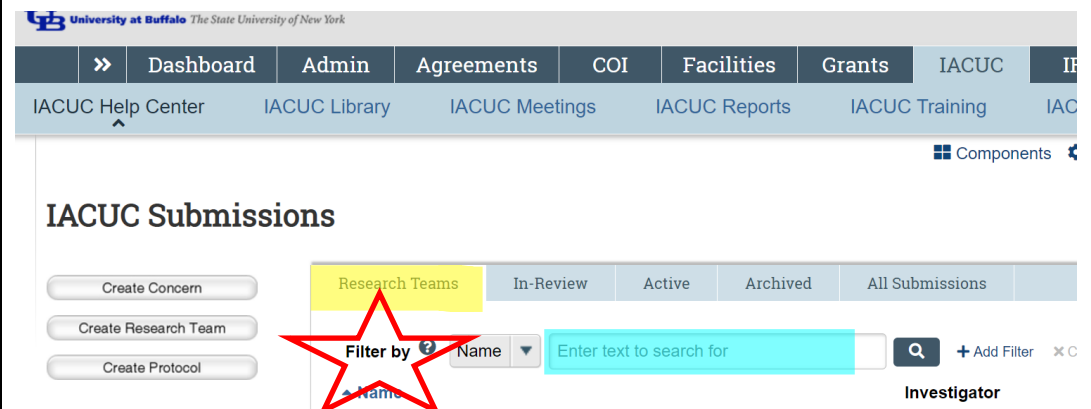
1. Log in to Click with UBIT name and password



2. Click on the IACUC tab in the bar across the top of the page



3. Click on your Research Team – You can filter the Team Names for an easier find



Quick Reference Guide: How to Remove a PI Proxy

4. Find your study that you want to remove a **PI Proxy** for. Click on the **Name** of the study.

IACUC Submissions

Buttons: Create Concern, Create Research Team, Create Protocol

My Inbox, Help Center

Filter by ID

ID	Name	Date Modified	State	Submit Type
PROTO202100041	Intra-arterial Chemotherapy for GBM in the Rat Model	5/25/2023 8:05 AM	Approved	New Prc Applicati
PROTO202000026	Nanoparticle PK - TB	5/24/2023 6:59 PM	Approved	New Prc Applicati

5. Click on **Assign PI Proxy** in the list of **Current Actions** on the left side of the screen. A window will pop up.

Prepare Letter, Submit Designated Review, Assign Coordinator, Assign Primary Contact, **Assign PI Proxy**, Manage Guest List, Manage Departures

Filter by Activity

Activity	At
Passed Annual Review Deadline	Ac
Reminded of Annual Review Deadline	Ac
Reminded of Annual Review Deadline	Ac
Reminded of Annual Review Deadline	Ac
Annual Review AP201900095 closed (Approved)	RE

6. In that window, you will see a list of the current **PI Proxies**. Mouse over the name of the **Proxy** you wish to remove and click on the small X that appears to the right of the name. That should remove them from the list of **Proxies**.


1. Select protocol team members to act as proxy:

First Name	Last Name	Employer	Title
[Redacted]	[Redacted]	030 University at Buffalo	LAB DIRECTOR, DEPT OF SURGERY & OTOLARYNGOLOGY

2. Comments: ?

Quick Reference Guide: How to Remove a PI Proxy

7. Click **OK** to close the window. You should see the list of **Proxies** updated on the protocol Workspace to reflect the change. If not, try refreshing the webpage.

3. Supporting documents: 

+ Add

Document Name

Date Modified

There are no items to display



OK

Cancel

You will need to repeat these steps for each protocol if you currently have multiple protocols with that person listed as **PI Proxy**